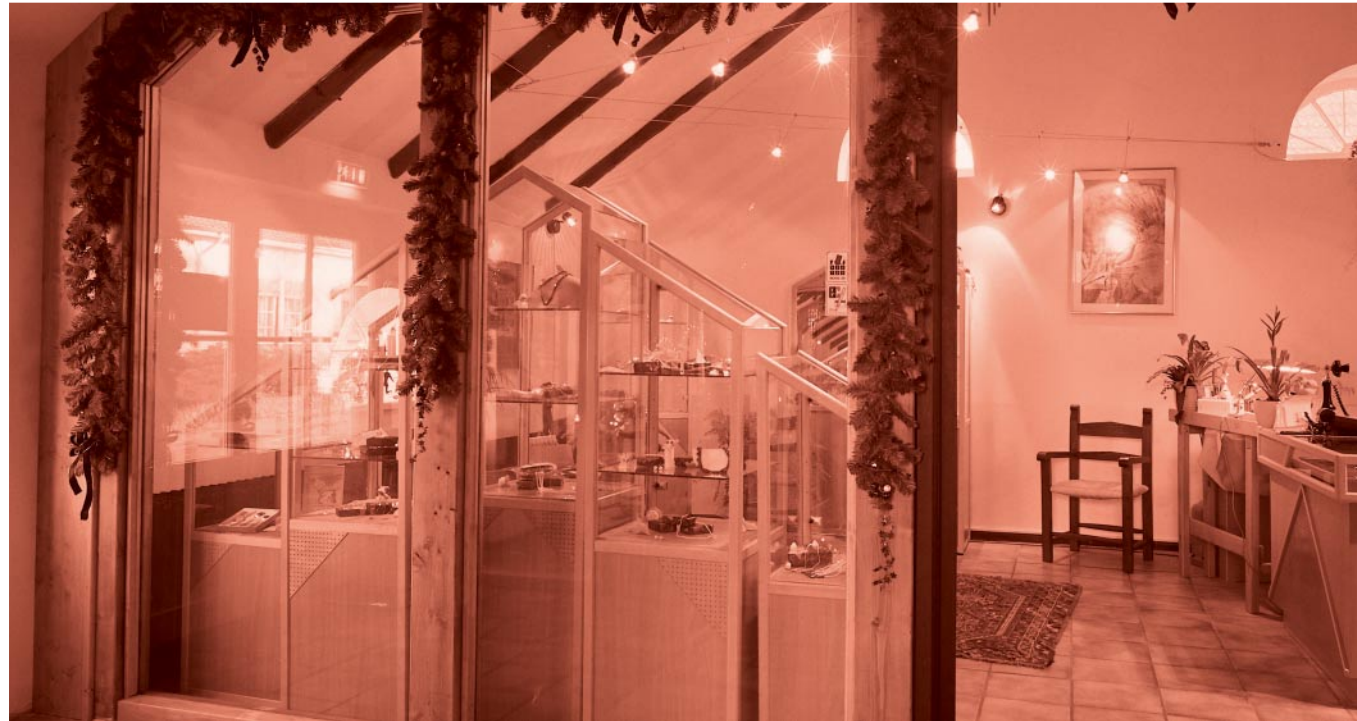




Stay cool, calm and collected!



Technical details

Application	Internal Application				External Application			
Type of glass	PYRANOVA® S2.0				PYRANOVA® S2.1			
Classification	Thickness in mm	Weight in kg/m²	Light transmission in %	Sound reduction in dB	Thickness in mm	Weight in kg/m²	Light transmission in %	Sound reduction in dB
EI 15	11	27.5	86	36	15	37.5	84	37
EI 30	15	37.5	85	38	19	47.5	83	39
EI 45	19	47.5	84	39	23	57.5	82	40
EI 60	23	57.5	83	40	27	67.5	81	41
Max production size (stock size) in mm	2000 x 3000							
Max production size (cut size) in mm	1900 x 2900							
Recommended temperature range in °C	-20, +50							

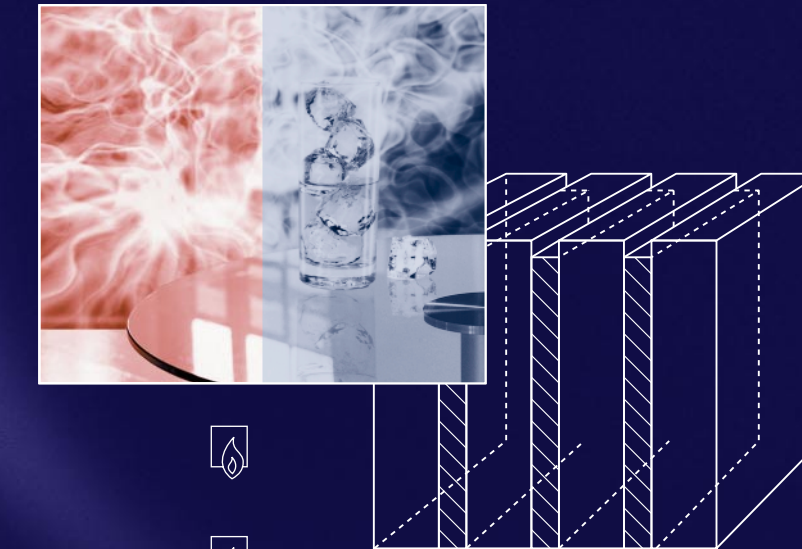
Explanation of the naming system

PYRANOVA® 60 S2.0
 60: fire resistance performance in minutes
 S2: glass type
 .0: area of application
 0 - internal use
 1 - external use



SCHOTT PYRANOVA®

Fire Resistant Glazing for integrity and insulation



White Goods
SCHOTT UK Ltd.
 Drummond Road
 Astonfields Industrial Estate
 Stafford ST16 3EL
 United Kingdom
 Phone: +44 (0)1785/223166
 Fax: +44 (0)1785/223522
 E-mail: info.uk@schott.com
 www.schott.com/uk

SCHOTT
 glass made of ideas

SCHOTT
 glass made of ideas



SCHOTT PYRANOVA®

Product description

PYRANOVA® is a clear multi-laminated glass for fire resistant glazing, combining integrity and insulation performance and impact protection.

PYRANOVA® is produced from two or more panes of float glass, separated by clear intumescent interlayers, offering a transparent option for traditional walls.

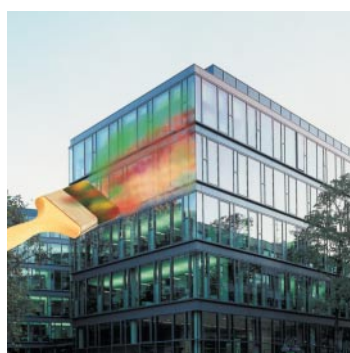
Applications

PYRANOVA® can be used as single glazing for doors, partitions & curtain walling installed into approved timber and steel frame systems.

PYRANOVA® can easily be incorporated into double glazed units to fulfill additional multifunctional requirements such as

- heat resistance,
- sound reduction,
- impact safety,
- solar control,
- shatter resistance,
- protection against manual attack,
- design.

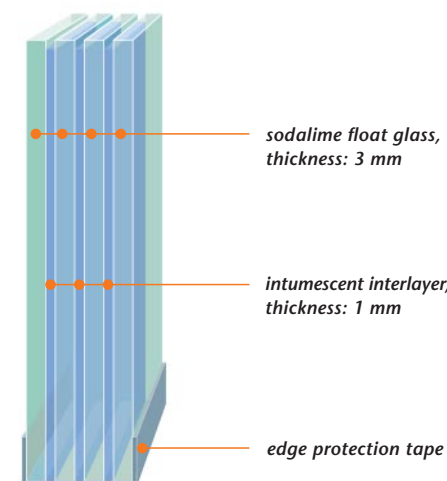
Due to various thicknesses and construction types PYRANOVA® is suitable for a wide range of internal and external applications.



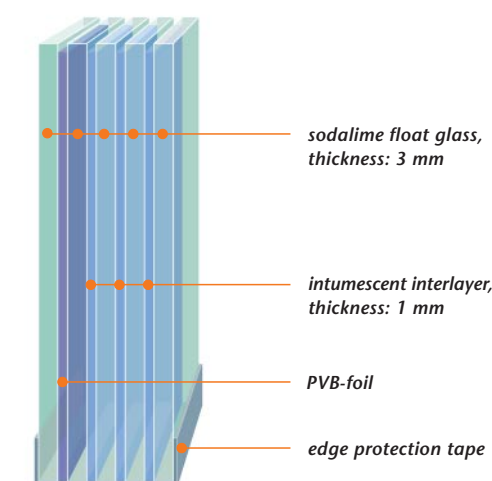
Fire Resistant Glazing ...

Construction types

Construction of PYRANOVA® single glazing
e.g. PYRANOVA® 30 S2.0

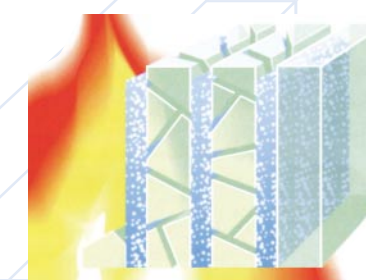
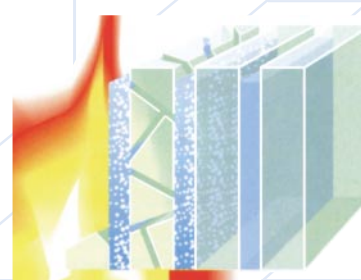
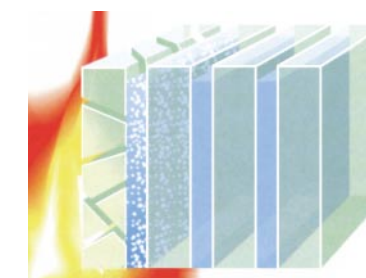


PYRANOVA® 30 S2.1



Performance

Exposed to fire the float glass sheet shatters, the intumescent interlayer foams up by turning opaque and forms a barrier, reducing the heat radiation.



... for integrity and insulation.

Certification

PYRANOVA® offers

- 15 to 60 minutes integrity and insulation (EI 15 to EI 60)
- according EN 13501 in frames and doors of steel and timber construction
- impact resistance acc. EN 12600 class A



Storage & Handling

When handling PYRANOVA® please take care to:

- avoid mechanical damage to the glass edges
- never remove or damage the edge protection tape
- support the glass edges on timber battens
- stacked the glass in vertical position
- store in dry conditions in the recommended temperature range

Our competence is your safety

SCHOTT is an international technology driven company whose core product is specialist glass. SCHOTT JENAer GLAS GmbH in Germany is certified to ISO 9001. Both the product and the production process are supervised by internal quality management and external authorities. Samples of the product are regularly tested by the authorities within the scope of building regulations. All panes carry a permanent mark which contains a company stamp and the type and thickness of glass.

SCHOTT and its partners have developed approved systems, which can be adapted to specific building designs. Each approved system is supported by large scale testing by official test authorities.

Fire performance classifications

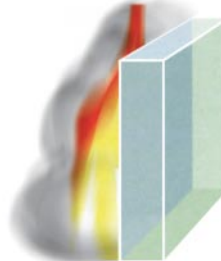
According to EN classification 13501-2 the fire resistant performance is expressed by letters, explaining the functional requirement and numbers, explaining the performance time in minutes.

Eg: A classification of EI 60 means 60 minutes integrity and 60 minutes insulation.

E: Integrity (étanchéité) i.e. PYRANOVA® provides a physical barrier



against flame

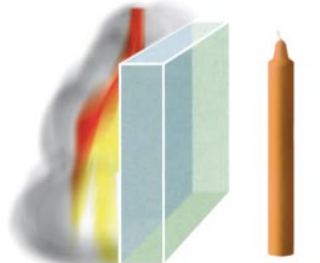


hot gases & smoke

I: Insulation (isolation) i.e. PYRANOVA® provides a physical barrier



against flame, hot gases & smoke as well as a reduced surface temperature



and resistance against spontaneous ignition on the unexposed side